



**Contact Information Form for Changning District Investment Promotion Center
and Economic Development Service Centers of Sub-Districts and Towns**

● Changning District Investment Promotion Center — Address: 7/F, No. 555, Loushanguan Rd.	Contacts: Liu Wenyan, Lin Xujun Tel: 62118061
● Shanghai Joinval Trade Group Investment and Development Co., Ltd. — Address: 5/F, No. 1, South Yuping Rd., West Zhongshan Rd.	Contact: He Shixiong Tel: 62267982, 13671778538
● Shanghai Lining Technology Co., Ltd. (Shanghai Garment Group) — Address: Room 202, No. 55, Jinlun Rd.	Contact: Wang Ruihua Tel: 62337611, 13564628506
● Shanghai New Changning Investment and Development Co., Ltd. — Address: Room 101A, Lane 369, Weining Rd.	Contact: Mo Jialing Tel: 62662133, 13918009898
● Economic Development Service Center of Xinhualu Sub-District, Changning District — Address: 2/F, Building B, Baodi Xinhua, No. 88, Anshun Rd.	Contact: Shen Xueping Tel: 62944624
● Economic Development Service Center of Jiangsulu Sub-District, Changning District Address: 2/F, No. 1118, Yuyuan Rd.	Contact: Zhou Zili Tel: 52730792, 15000620692
● Economic Development Service Center of Huayanglu Sub-District, Changning District Address: 3/F, No. 1507, Dingxi Rd. (entrance from No. 1525, Dingxi Rd.)	Contact: Liu Jun Tel: 80110040, 13916941110
● Economic Development Service Center of Zhoujiaqiao Sub-District, Changning District Address: No. 772, Wuyi Rd.	Contact: Wang Zhe Tel: 52821827, 13917803721
● Economic Development Service Center of Tianshanlu Sub-District, Changning District Address: B309, No. 64, Tianshanercun Residential Area	Contact: Dong Xianghai Tel: 62261169, 13162685018
● Economic Development Service Center of Xianxiaxincun Sub-District, Changning District Address: No. 357, Maotai Rd.	Contact: Shi Wei Tel: 62780113, 13585970082
● Economic Development Service Center of Hongqiao Sub-District, Changning District Address: No. 2238, West Yan' an Rd.	Contact: Ji Hua Tel: 22850701
● Economic Development Service Center of Chengjiaqiao Sub-District, Changning District Address: 6/F, Hongqiao Business Building, No. 2272, Hongqiao Rd.	Contact: Ding Yang Tel: 22300020
● Economic Development Service Center of Beixinjing Sub-District, Changning District Address: No. 37, North Pusong Rd.	Contact: Shen Wei Tel: 52163752, 15900880868
● Economic Development Service Center of Xinjing Town, Changning District Address: No. 1178, Beidi Rd.	Contact: Gao Yuntian Tel: 50178665, 13501734274
● Business Service Center of the Hongqiao Linkong Economic Zone Address: 8/F, Building A, No. 789, West Tianshan Rd.	Contact: Yin Zhiyan Tel: 52198610



Changning, Shanghai
WeChat Official Account



Changning, Shanghai

Address: No. 599, Changning Rd., Changning District, Shanghai
Website: <http://www.shcn.gov.cn/>



2025 来长宁
助力发展



上海市长宁区投资指南

SHANGHAI CHANGNING DISTRICT INVESTMENT GUIDE



INVESTMENT

CONTENTS

目录



01 Overview

- Geography / 01
- Administrative Divisions / 02
- Easy Connectivity / 03
- Overall Prowess / 04
- International Features / 07
- History and Culture / 08
- Dynamic Business / 09
- Ecological Environment / 10
- Education / 11
- Healthcare / 12
- Sports and Events / 13

02 Strategic Opportunities

- Hongqiao Brand / 15
- Digital Changning / 16

03 Industrial Structure

- Industrial Strategy / 17
- Internet+Life Services / 18
- Aviation Services / 19
- Fashion and Creative / 20
- Artificial Intelligence / 21
- Financial Services / 22
- Life and Health / 23

04 Specialized Functional Parks

- Hongqiao M&A Agglomeration Zone Changning Core Functional Area / 25
- “Shanghai Silicon Valley” Technology Innovation Neighborhood / 25
- Hongqiao International Low-altitude Economy Industrial Park (Changning Park) / 26
- “Source of Hongqiao” Online New Economy Ecological Park / 26
- Hongqiao Linkong Multinational (HQ) Technology Innovation Park / 27
- Greater Hongqiao Life Sciences Innovation Center / 27

05 Service Platforms

- Hongqiao International Opening-up Hub Business Service Center / 29
- Hongqiao International Trade Service Center / 29
- Shanghai Hongqiao One-Stop Service Center for Overseas Talents / 30
- Shanghai (Changning) Enterprises Going Global Comprehensive Service Center / 30
- Blue Whale Enterprise Workstations / 31

06 Recommended Carriers

- New Office Buildings / 33
- Creative Parks / 43
- Old Western-style Villas / 44

07 Organization

- Organization / 45

1 Overview

Geography

Changning District boasts a pleasant, verdant environment with a mild and humid climate. Dozens of roads interweave to form a robust transportation network that offers seamless connectivity, while Suzhou Creek runs east to west across the district. Changning is increasingly becoming a vital hub where people, logistics, information, and capital converge. It stands out as one of the most desirable urban areas in Shanghai, excelling in traffic, ecology, living, and cultural environment.



Administrative Divisions

Changning District, situated in downtown Shanghai, is a central urban area with exceptional comprehensive strength and well-balanced development. It comprises 9 sub-districts and 1 town, with a land area of 37.18 km² and a registered population of 575,800. Located in the west of Shanghai's downtown, Changning shares borders with Jingan and Xuhui Districts to the east, Minhang District to the southwest, and Putuo and Jiading Districts to the north. Renowned for its flourishing service industry, international prominence, rich cultural heritage, business-friendly atmosphere, and excellent living conditions, Changning represents a microcosm of Shanghai's remarkable journey of reform, urban development, and openness.



Easy Connectivity

Changning District is situated at the Y-shaped intersection of the Shanghai-Nanjing and Shanghai-Hangzhou development axes. It allows easy land access to Jiangsu and Zhejiang provinces and global connectivity by air, thanks to a multidimensional transportation network of airports, expressways, rail transit, and urban arterial roads. Situated at the junction of Minhang and Changning Districts, the Hongqiao International Airport is one of Shanghai's two major airports, alongside the Pudong International Airport. As an integral part of the Hongqiao Integrated Transportation Hub, it offers seamless connectivity to major cities in the Yangtze River Delta (YRD) region within a three-hour radius.

Overall Prowess

Outstanding Overall Strength

RMB
278.9 bn

Regional GDP in 2024

Changning's regional GDP surpassed RMB 270 bn for the first time
7.4% growth rate, ranking 2nd in Shanghai
Per capita GDP reached RMB 404,000 in 2024, among the highest in the city

Rapid Economic Growth

74% of Changning's tax revenue

Tax revenue of "3+3" key industries

RMB 43.1 billion

YoY revenue growth of key industries: 7.2%

- Internet+life services: 13.2%
- Aviation services: 58.6%
- Fashion and creative: 15.1%
- Artificial intelligence: 28.6%
- Financial services: 1.9%
- Life and health: 2.7%

13,750
RMB/m²

Taxes generated per unit area of key buildings

Buildings generating over RMB 100 mn in tax revenue in 2024: 39

Distinctive Digital Economy

59.8%

Share of the digital economy of the district's total tax revenue

Digital economy enterprises

7,100

33

E-commerce platforms with total transactions exceeding RMB 100 mn

Total transactions of such e-commerce platforms
1st in Shanghai

Clustering of HQ Enterprises

Various HQs: 150

Regional HQs of multinationals: 89

Newly certified HQs in 2024: 6

HQs of multinationals: 4



*In no particular order of priority



International Features

Changning is one of Shanghai's most international districts, with nearly 6,500 foreign-funded enterprises, nearly 700 permanent offices of such enterprises, 89 regional HQs of multinationals, and 28 consular offices. Its registered foreigners account for nearly 1/5 of Shanghai's total. It hosts Shanghai's first residential area for expatriates, i.e., the well-known "Mini-UN" Gubei New Area, first international library "Window of China" Shanghai Reading Center & Shanghai Hongqiao International Library, and many international education and healthcare institutions, such as YK Pao School, Yew Chung International School, and United Family Hospital. Changning actively seeks friendly exchanges by building close ties with 12 foreign urban areas across 4 continents, including Hirakata city in Osaka Prefecture, Japan, and Gangseo District in Seoul, South Korea.



Shanghai Oktoberfest



YK Pao School

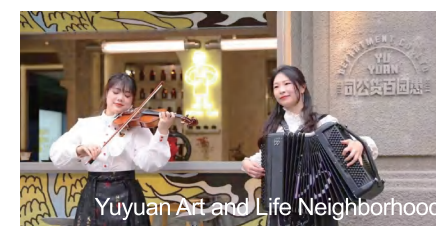


Hongqiao Friendship Alliance Re-Election Conference

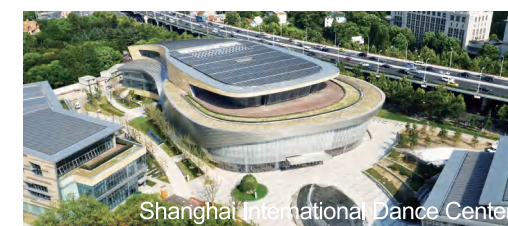


History and Culture

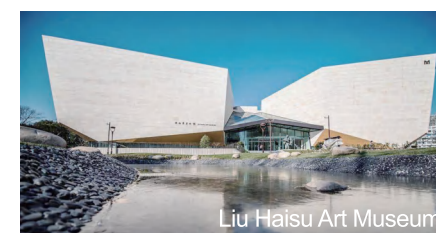
Changning is home to many cultural and tourism institutions like the Shanghai International Dance Center, Liu Haisu Art Museum, Cheng Shifa Art Museum, Shanghai Oil Painting and Sculpture Institute, and Song Qingling Mausoleum. The district boasts rich cultural and tourism resources, with 14 hotels rated three stars or above, including 9 five-star hotels. Its attractions include the 4A-level scenic spot Shanghai Zoo and 5 national and municipal-level cultural tourism integration pilot projects, such as the Changning Folk Culture Center, Gubei Civic Center, and Yuyuan Road Neighborhood Civic Center. Changning was included in the fourth batch of national public cultural service system demonstration areas. The Yuyuan Art and Life Neighborhood was honored among the second batch of national tourism and leisure districts, the Xinhua Historical Style Neighborhood and Yuyuan Road Historical Style Neighborhood were included in the second and third batch of national night culture and tourism consumption gathering areas, respectively, and the Tranquil and Elegant Wuyi Neighborhood was designated a tourism and leisure district in Shanghai.



Yuyuan Art and Life Neighborhood



Shanghai International Dance Center



Liu Haisu Art Museum



Columbia Circle

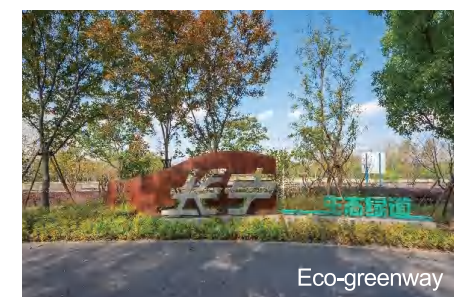
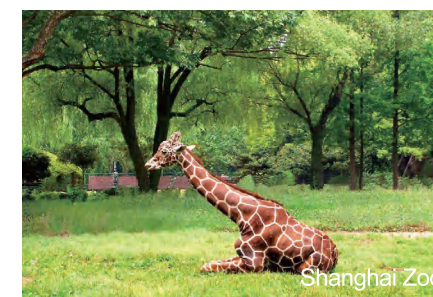
Dynamic Business

Changning is one of the first established business and commercial districts in Shanghai. In response to the municipal government's "Shopping in Shanghai" initiative, Changning has been optimizing its two municipal-level business districts: the Zhongshan Park business district has become a vibrant commercial hub, while the Hongqiao-Gubei business district has been revitalized as a premier destination for global product purchases. Changning strives to integrate the development of two district-level business districts: the airport vicinity business district will become a new highland of city-industry integration, and the culturally rich and historical Xinhua business district will be built into a landmark for cultural consumption. By revitalizing diverse consumption scenarios, Changning is cultivating distinctive commercial neighborhoods such as Yuyuan Rd., Wuyi Rd., and Xinhua Rd. and enhancing consumption quality and capacity to shape a unique local landscape.



Ecological Environment

Changning boasts many medium and large-sized green areas, such as Shanghai Zoo, Zhongshan Park, Huashan Green, Yanhong Green, and Haisu Green, as well as 14 major boulevards. It ranks among the top in environmental quality and green coverage in downtown Shanghai, with a per capita public green area of 7.6 m² and a green coverage rate of 34.15%.



Changning has made great strides in pollution prevention and control. The average PM2.5 concentration has dropped to 28.1 micrograms per cubic meter, among the lowest in central urban areas, and all city-monitored water sections of 9 rivers meet Class III surface water quality standards. As the ecological environment continues to improve, residents enjoy greater well-being and better access to nature.

Education

Changning has established a robust educational development system spanning basic, vocational, adult, community and international education. This integrated approach has fostered balanced and coordinated growth across all educational sectors, leading to high-quality compulsory education and impactful educational reform initiatives in Shanghai and nationwide. Its collaborations with renowned institutions such as Fudan University, East China Normal University, East China University of Political Science and Law, and Shanghai International Studies University have expanded the reach of high-quality educational resources and elevated overall education standards in the district. Changning was designated by the Ministry of Education as a Pilot Zone for Quality and Balanced Development of National Compulsory Education.



East China University of Political Science and Law



Yuyuan Road No. 1 Primary School



Yan'an Middle School



Healthcare

Changning has built a relatively comprehensive medical service network and public health system. In 2024, the district was home to a total of 442 medical and health institutions, including Shanghai Tongren Hospital, a Grade 3B general hospital, Shanghai Guanghua Hospital of Integrated Traditional Chinese and Western Medicine, a Grade 3A specialist hospital, Changning District Tianshan Hospital of Traditional Chinese Medicine, Changning Maternal and Child Health Hospital, Changning District Mental Health Center, and 10 community health service centers. There are also disease prevention and control centers, and specialized health institutions like the Changning District Center for Disease Control and Prevention and the Supervisory Institute of the Changning District Health and Wellness Committee, as well as Chinese-foreign joint venture or cooperative hospitals, and private medical providers such as Shanghai United Family Hospital.



Strategic Opportunities

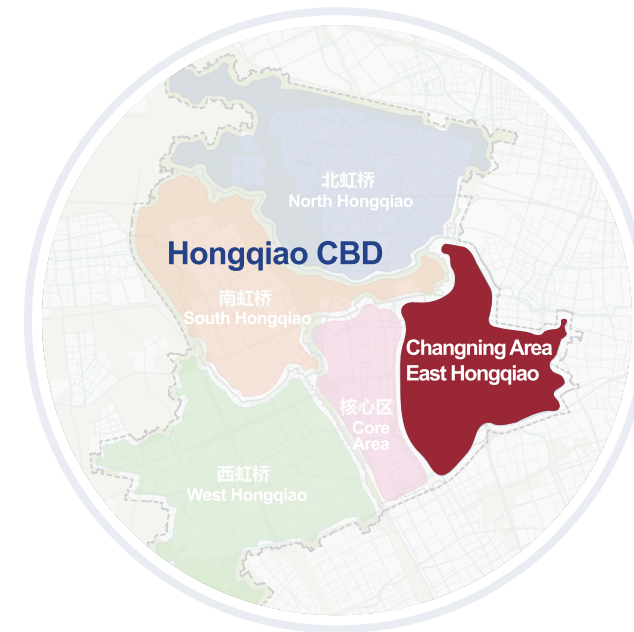
2

Sports and Events

Five athletes from Changning competed in the Paris 2024 Olympic Games and won a total of six medals—1 gold, 2 silver, and 3 bronze—placing the district first in Shanghai for total medal count. Changning is committed to building a 15-minute sports life circle by expanding its sports facilities. The district now has 2 public sports venues, 5 community fitness centers, 8 public fitness stations, 12 sports and health centers for seniors, 25 public sports courts, 38 fitness trails, and 435 community fitness spots.

The national fitness movement is thriving in Changning, where 239 events have been held. Highlights include the Changning New Year Day Run, Yangtze River Delta Friendly Districts Bridge Invitational, Spring Festival Guandan Card Game Competition of Key Industry Enterprises in Changning, Shanghai Women's Half Marathon, and the 8th Changning District Sports Games & 2nd Changning Citizens Sports Festival, which have contributed to a vibrant atmosphere for district-wide events and activities.

The district also offers guidance on sports and fitness to improve public fitness and health literacy. By offering free physical fitness tests, informative guidance, and sports skill courses for individuals, enterprises, institutions, buildings and communities, the district has steadily improved its comprehensive national physical fitness index.



Changning District, located at the intersection of the northward and southward expansion belts of the Hongqiao International Opening-up Hub, is a core node and a vital gateway of the Greater Hongqiao area, as well as the birthplace of the Hongqiao brand. Changning is transforming its strategic advantages into development momentum and turning policy incentives into growth drivers. Despite occupying less than **1/7** of Hongqiao CBD's land area, it contributed over **2/5** of the tax revenue.

In 2024, East Hongqiao generated RMB **21.05** billion in tax revenue, up **11.8%** year on year. It has attracted a total of **62** municipally-certified multinational regional HQs and foreign-funded R&D centers.



Hongqiao Brand

Changning is the only downtown district in Shanghai fully integrated into the “1 Core and 2 Belts” functional layout of the Hongqiao International Opening-up Hub. In line with the Overall Plan for the Construction of Hongqiao International Opening-up Hub, it has set up the East Hongqiao Development Office to drive the implementation of the 26 policies outlined in the plan. It strives to build the Hongqiao International Opening-up Hub into a robust growth pole in the YRD region, and a key node serving Shanghai’s efforts to create a new development paradigm.



East Hongqiao Center

Digital Changning

Changning boasts a rich legacy of over 20 years of digital innovation. Embracing the city’s drive towards digital transformation, it strives to become a trailblazer in digital economy transformation, an exemplar of digital lifestyles and a top hub for digital governance.

Changning is a vibrant hub for the digital economy, with over 7,100 thriving digital enterprises, such as industry giants Pinduoduo, Ctrip and Buy Quickly. It has partnered with the Digital Currency Research Institute of the People’s Bank of China to launch the country’s first digital trade incubation base of digital RMB, which is dedicated to serving Hongqiao CBD and extending its reach to consumer stores along the rail line to create an offline “key pilot street for digital RMB”. It has been enhancing its digital governance capabilities via the “Government Online-Offline Shanghai” and “One Network Administration” initiatives. Changning also strives to bolster information infrastructure capacity and performance, achieving basic 5G network coverage with an average download rate of 820 Mbps.



Digital Changning Experience Museum

3 Industrial Structure



Industrial Strategy

Changning is accelerating the development of a modern industrial system to support Shanghai's goal of becoming an international economic center. The district is promoting the clustered and specialized development of industries such as smart Internet, aviation and transportation services, fashion consumption, and business and financial services. Focusing on industrial trends, enterprise needs, and talent aspirations, Changning has established a "1+5" policy framework to drive high-quality economic development. Tailored policy support packages offer clear guidance, boost confidence and inject vitality into enterprises. Through proactive governance, Changning is fostering a vibrant market environment and cultivating new quality productive forces.



Internet+Life Services

Overview

In June 2016, the Shanghai government approved the establishment of a pilot zone for "Internet+life service" innovation in Changning, a joint initiative by the Shanghai Municipal Commission of Commerce and the Changning District Government. Changning has since been actively implementing Shanghai's key strategic decisions and leveraging the exemplary and leading role of

the pilot zone to drive steady progress in industrial capacity, institutional development, and brand influence. The zone has attracted many leading companies such as Pinduoduo, Ctrip and Buy Quickly, becoming a hub for the "Internet+life service industry" in Shanghai. It plays an increasingly vital role in leading and driving the growth of Shanghai's innovative economy and emerging industries.

Strategic Planning

Since 2021, Changning has been bolstering its strengths in the Internet+life service industry. It is committed to harnessing new technologies, prioritizing innovative models, and developing new business formats with an Internet-based mindset. By leveraging its industrial strengths and unlocking growth potential, Changning aims to elevate the development of the Internet+life services industry to new heights and become a world-class district with global influence.



Aviation Services

Overview

Aviation services are a specialty and pillar industry of Changning, a district located in central Shanghai. By the end of 2024, Changning hosted 60% of Shanghai's airline headquarters, leading airlines such as China Eastern Airlines, Hainan Airlines, Spring Airlines, China South Airlines, and AVINEX, and aviation organizations such as CAAC

East China Regional Administration, CAAC Air Traffic Management Bureau, Shanghai International Aviation Arbitration Court, and Shanghai Society of Aeronautics. It will continue to promote air cargo development, foster synergies between cross-border e-commerce and aviation logistics, and drive the clustering of the low-altitude economy.

Parks

The Hongqiao Linkong Economic Zone, located in western Changning with an area of 13.89 km², boasts the most sophisticated industrial functions among the 14 airport economic zones in China. It strives to

become an international aviation hub, a global airline headquarters base, a high-end airport industry cluster, a national domestic business aircraft operation base, and a low-carbon green development zone.



Fashion and Creative

Overview

In line with the Action Plan for Promoting High-quality Development of the Fashion Consumer Goods Industry in Shanghai, Changning has been fostering fashion consumption neighborhood clusters, expanding the influence of the Demonstration Zone for Building Shanghai into a Fashion Capital, and advancing sub-sectors such as fashion consumption, creative design, exhibitions and conferences, all-media, cultural entertain-

ment, film and television services, and fashion platforms. Changning has held high-profile events like Made in Shanghai, Fashion Customization Week, and MODE Shanghai Fashion Trade Show for several consecutive years, and attracted renowned brands like Haglöfs, Bananain, Fabrique, Chagee, Saturnbird Coffee, and Tastien.

Parks

Changning is actively creating trendsetting landmarks, from Columbia Circle, an international hub for art and cultural activities, the Changning section of Yuyuan Rd., known for its fusion of diverse lifestyles, and the culturally distinctive Wuyi Road neighborhood, to the

historically preserved Xinhua Road neighborhood. It boasts 6 municipal-level cultural and creative parks, and 10 municipal-level cultural and creative demonstration buildings and spaces.





Artificial Intelligence

Overview

After years of development, Changning's AI industry is moving towards deeper vertical specialization. The district encourages companies to develop proprietary, sector-specific AI models by offering policy support with incentives for industry breakthroughs, thus fostering technological innovation and industry growth. It also

supports the creation of innovation demonstration projects to create exemplary, innovative and leading application scenarios and facilitate real-world AI adoption. Under the theme of "AI+", the district has hosted high-impact events to promote cooperation and exchanges among businesses and drive AI integration across industries.

Parks

Xinwei Intelligent Valley (at No. 1328, Dingxi Rd.), a municipal maker space, specializes in AI with expertise and talent support from the Shanghai Institute of Microsystem and Information Technology and the Shanghai Institute of Ceramics. Huawei-China Unicom Artificial Intelligence Innovation Demonstration Center (at No. 1033, Changning Rd.), a municipal maker

space, integrates advanced technologies and industrial resources of Huawei and China Unicom. As part of the AI innovation, entrepreneurship, and application demonstration cluster in the central area of "Hongqiao Smart Valley", the Bingu AI Industry Building (at No. 369, Weining Rd.) was incorporated into Zhangjiang Changning Park.

Financial Services

Overview

Since 2021, Changning's financial service industry has entered a fast track of growth, now home to nearly 1,000 financial companies spanning banking, securities, insurance and private equity. A diversified financial industry landscape is emerging, from licensed financial institutions like Origin Asset Management, Cinda Futures, SC Consumer Finance and Oriental International Group Finance Company, and local financial organizations such as Chailease International Finance Corp. and Ningpu Shidai Financial Leasing, to private equity funds like Guosheng Capital, Highlight Capital, and Shanghai Real Estate Urban Renewal Fund. Changning is advancing Hongqiao Wealth

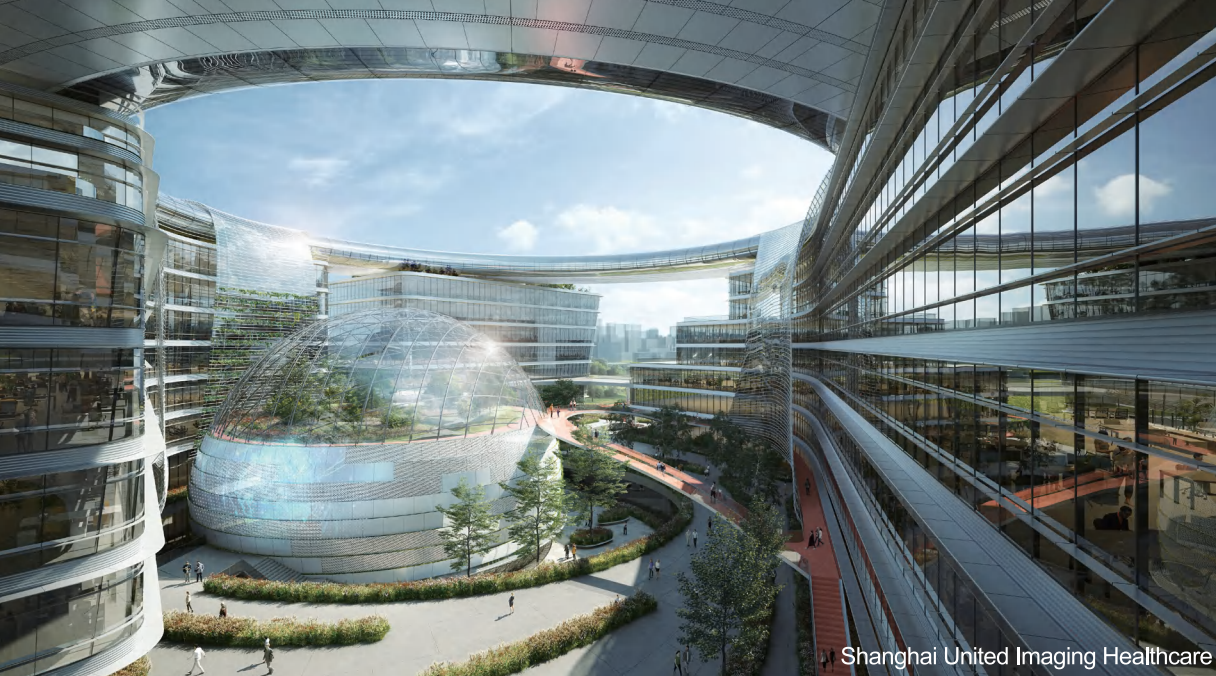
Management Corridor and building a pattern of "One Belt, Two Parks, Multiple Points" centered around Yuyuan Rd., Xinhua Rd., Hongqiao Rd., East Hongqiao, Changning Financial Park and Xijiao International Financial Industrial Park. It is also exploring the creation of a wealth management hub in the Greater Hongqiao area with an impact on the YRD region. It has established a financing service center and the Hongqiao M&A Agglomeration Zone Changning Core Functional Area to drive regional industrial upgrades and promote high-quality economic growth. Its total assets under management have exceeded RMB 1 trillion.

Parks

Changning Financial Park, located at No. 1320, Yuyuan Rd., spans 8,025 m² and comprises 11 European-style villas, several of which were recognized as excellent modern historical buildings in Shanghai. The Park hosts notable companies like Guosheng Capital, Zhongping Capital, Genharmony Capital, and Rosefinch Fund, which collectively manage assets worth over RMB 120 billion.

Xijiao International Financial Industrial Park, situated at No. 899, Jianhe Rd. and adjacent to Hongqiao Integrated Transportation Hub, spans about 4,400 m² and features 20 villas. It has attracted investment companies like Origin Asset Management, aviation investment funds and bank-affiliated sci-tech innovation equity investment funds. Some funds were selected in the first batch of members of the industrial fund pool in Hongqiao CBD. Its tenants collectively manage assets exceeding RMB 80 billion.





Specialized Functional Parks

4



Life and Health

Overview

Since 2020, Changning has focused on advancing the life and health industry and gradually created a life sciences innovation function centered on high-end R&D. This has fostered a complementary development pattern for collaborative innovation with

Zhangjiang Pharma Valley to the east and BioBAY to the north. It has attracted renowned companies specializing in niche life and health sectors, including Sinopharm Group, Shanghai Institute of Biological Products, Danaher, and Nanos Medical.

Parks

Changning is committed to developing the Greater Hongqiao Life Sciences Innovation Center. With the goal of accelerating the creation of a life and health innovation demonstration zone in the YRD region, the

district strives to enhance its three functions of serving as a hub for digital healthcare innovation, a commercial distribution center for drugs and medical devices, and a venue for investment and business cooperation.

Hongqiao M&A Agglomeration Zone Changning Core Functional Area

“Shanghai Silicon Valley” Technology Innovation Neighborhood

Hongqiao International Low-altitude Economy Industrial Park (Changning Park)

“Source of Hongqiao” Online New Economy Ecological Park

Hongqiao Linkong Multinational (HQ) Technology Innovation Park

Greater Hongqiao Life Sciences Innovation Center



Hongqiao M&A Agglomeration Zone Changning Core Functional Area

Leveraging the unique strengths of Hongqiao CBD in “big transportation, exhibition and commerce” and Changning’s industrial innovation vitality, the Functional Area aims to build an integrated M&A service platform characterized by overseas M&As and focused on strengthening industrial chains of new quality productive forces. By 2027, the district will establish a complete functional framework and industrial system for the Zone, creating an M&A ecosystem of “1 pool, 3 alliances, and N platforms”. Focusing on the digital economy, life and health, green energy, NEVs, and aviation, the district plans to nurture 3 to 5 publicly listed companies or M&A platform firms with global M&A leadership capabilities, and attract 1 to 2 leading M&A funds and a group of mid-to-small M&A funds and specialized M&A funds, with total M&A transactions exceeding RMB 50 billion.



“Shanghai Silicon Valley” Technology Innovation Neighborhood

Location: East to Jiangsu Rd., South to West Yan’an Rd., West to Kaixuan Rd., North to Changning Rd. and Yuyuan Rd., with Wuyi Rd. and Dingxi Rd. at the center, forming a cross-shaped neighborhood spanning 1.48 km².

The Neighborhood is part of Changning’s push to build an “Innovation China” pilot city, inspired by Silicon Valley’s model. It explores high-quality regional economic growth through urban renewal and the integration of government, industry, academia, research, finance, services, and applications. The cross-shaped neighborhood will become a comprehensive hub for innovation and entrepreneurship. By 2025, it will become a model for urban renewal that blends innovation elements with cultural heritage, characterized by “digitally driven innovation”, “4-in-1 synergies” (innovation, entrepreneurship, venture capital and creativity), and “international open innovation”. It will create a future-ready open innovation ecosystem that connects globally and fosters multicultural integration. This initiative will deepen local technology-economy integration, create an open innovation ecosystem, and elevate the district’s capacity and core competitiveness.



Hongqiao International Low-altitude Economy Industrial Park (Changning Park)

Location: East Hongqiao Center (No. 299, Youle Rd.)
Zhongguancun Hongqiao Innovation Center (No. 365, Linhong Rd.)
Hongqiao International Technology Plaza (No. 999, Jinzhong Rd.)
Xinda Plaza (No. 1158, Xiehe Rd.)

The Park leverages the headquarters and digital economies to build three application scenarios: general aviation, industry, and cultural tourism. It aims to establish an industrial chain and ecosystem for the low-altitude economy, foster enterprise clustering, and create a headquarters cluster for the low-altitude economy in the YRD region. Phase I focuses on economic platforms with a total office area of 147,000 m², such as East Hongqiao Center, Zhongguancun Hongqiao Innovation Center, Hongqiao International Technology Plaza, and Xinda Plaza. With major projects like the China Academy of Space Electronics Technology, the park is fostering a clustering effect of the low-altitude economy.



“Source of Hongqiao” Online New Economy Ecological Park

Location: West Tianshan Road Development Axis
North: Linkong area
South: Hongqiao Airport’s eastern area



As one of Shanghai’s three municipal-level online new economy ecological parks, the Park will leverage the core brands of “Source of Hongqiao” and “Digital Changning” to create a national leading hub for online new economy innovation and a cluster for digital economy headquarters. In 2024, it attracted over 200 new digital economy enterprises. Notable projects introduced include the iFlytek artificial intelligence Project, Rongmeme Livestreaming Center, Livat Shanghai, T9, and Fabrique Garment Technology.

Hongqiao Linkong Multinational (HQ) Technology Innovation Park

Location: No. 388, North Fuquan Rd.



Greater Hongqiao Life Sciences Innovation Center

Location: Building D, No. 207, Songhong Rd.

The Center is a key platform for advancing Changning's life and health industry, focusing on empowering high-end R&D in life sciences innovation. It aims to accelerate the clustering of high-quality enterprises, create distinctive landmarks, build an industrial ecosystem, and optimize the business environment. It will also promote functional platforms, such as the digital and intelligent full lifecycle precision sci-tech innovation platform, with a focus on leading companies like Danaher and Labway.



Service Platforms

5



Hongqiao International Opening-up Hub Business Service Center

Hongqiao International Trade Service Center

Shanghai Hongqiao One-Stop Service Center for Overseas Talents

Shanghai (Changning) Enterprises Going Global Comprehensive Service Center

Blue Whale Enterprise Workstations

Hongqiao International Trade Service Center

Location: 1/F, No. 35, Loushanguan Rd.

As “a gateway to Hongqiao, a business hub and a service platform”, the Center aims to become a service base for the Hongqiao International Opening-up Hub. It offers one-stop services, international functions, and a digital experience to help companies seize new opportunities in the globally-oriented Hongqiao region. The Center has established itself as the “Digital Trade Incubation Base of Digital RMB”, the “RCEP Enterprise Service Consultation Station”, the “Firefly Market Supervision Bureau Building Service Station”, the “Dandelion Taxation Service Station”, and the “APEC Business Travel Card Consultation Service Station”. By integrating services like enterprise registration, industry policy applications, quality infrastructure, talent support, taxation, and finance, it has become a gateway and window into the open economy in Greater Hongqiao. The Center provides companies with essential business services, cross-government services, and supporting services to guide strategic development.



Hongqiao International Trade Service Center

Location: 3/F, ShanghaiMart, No. 2299, West Yan'an Rd.

In line with the national strategy for the Hongqiao International Opening-up Hub, the Center leverages the China International Import Expo (CIIE) and platforms like ShanghaiMart to enhance the “Most Hongqiao” brand, strengthen international trade capabilities, and create a global trade ecosystem cooperation platform that brings together economic and trade institutions, offers comprehensive trade functions, and provides convenient business services. The platform will empower enterprises in international cooperation and competition to seize opportunities for “going global”. The Center features 4 functional areas: the one-stop Hongqiao trade facilitation service area, the global shared trade service platform, the CIIE showcase area, and the “Trade+” innovation incubation base. It offers 10 dedicated service windows, covering customs, CIIE, foreign investment, business, banking, investment consultation, legal and regulatory consultation, cross-border procurement negotiations, and cross-border e-commerce consultation. Five specialized “going global” service windows have been added, like the APEC Business Travel Card Consultation Service Station and the overseas testing/certification service platform.



Shanghai Hongqiao One-Stop Service Center for Overseas Talents

Location: 2/F, Building T5, No. 377, Songhong Rd.

Focusing on high-frequency needs like overseas talent affairs, lifestyle services, and community integration, the Center has been re-launched as a leading international comprehensive service hub that meets top global and national standards. With the goal of system integration, digital empowerment, diversified innovation, and convenient efficiency, the Center has integrated 35 government services and 30 lifestyle services by enhancing software functions and hardware facilities, offering 7 key services to overseas talent. It has pioneered several city-first innovative initiatives, such as foreign social worker teams, foreign currency exchange services in government service halls, and physical stations for the Human Resources Service Industry Alliance. A dedicated webpage, available in 9 languages such as English, Japanese, German, and French, provides talent policy explanations, lifestyle service guidance and event information.



Scan the QR code on the left to access the official website



Shanghai (Changning) Enterprises Going Global Comprehensive Service Center

Location: 8/F, Tower D, No. 51, Fuquan Rd., Changning District

Leveraging public service resources like the Hongqiao Overseas Development Service Center, market service resources, and regional advantages such as the e-commerce ecosystem, aviation hub and international trade functions, the Center strives to work with leading cross-border e-commerce enterprises in the area and strengthen partnerships with global expansion service providers and international trade institutions. The center connects high-quality domestic and international resources to provide comprehensive support for enterprises looking to expand in China and beyond. It is committed to creating a headquarters cluster for enterprises going global, focusing on industrial clusters, aviation logistics, overseas expansion and professional services.



Blue Whale Enterprise Workstations

Location: Shanghai Arch Blue Whale Enterprise Workstation: South of No. 533, Loushanguan Rd.
(50 meters inside from the Loushanguan Rd. entrance)
East Hongqiao Blue Whale Enterprise Studio: No. 1358, Xiehe Rd.
(50 meters inside from the west entrance)
Shanghai Silicon Alley Blue Whale Enterprise Studio: No. 1304, Dingxi Rd.
(Silicon Alley NO.1 Innovation Space)

The Changning District Public Security Bureau was the first in the city to establish Blue Whale Enterprise Workstations, which assist enterprises in internal risk prevention, resolve enterprise-related disputes, combat enterprise-related illegal activities, raise legal awareness, and offer face-to-face and steward services. These workstations aim to safeguard a world-class business environment with law enforcement and legal services. Changning has developed a comprehensive police service system covering the eastern neighborhoods, central buildings, and western industrial parks.



Recommended Carriers

6



Changning, the birthplace of the Hongqiao brand, has been one of the first central urban areas in Shanghai to develop the building economy. It boasts excellent transportation and business facilities, with nearly 7 million m² of business spaces and abundant carrier resources along multiple metro lines. Changning is home to various high-quality business buildings like Shanghai Arch, The Place, and Raffles City Changning, municipal- and district-level creative parks, and historical garden villas like the Former Residence of Shi Liang and Sun Ke Villa, which host many global 500 companies and headquarter-type enterprises. Since 2021, Changning has developed a range of business buildings to meet the diverse and high-end needs of companies, such as IM Shanghai, EBA Center Hongqiao, East Hongqiao Center, Oriental Pearl Triumph Center, Livat Shanghai, C · Park Haisu, and Hongqiao Union Building, providing over 1.5 million m² of high-quality office and commercial spaces. Changning will further enhance its top-class building supply with new projects like A.F.A Shanghai Rongqiao Center, Crystal Bridge, and Hongqiao Uptown, adding over 1 million m² of commercial office spaces to invigorate its building economy.

New Office Buildings

(Sorted by year of completion)

1. Oriental Pearl Triumph Center
 2. Baodi Xinhua
 3. IM Shanghai
 4. East Hongqiao Center
 5. EBA Center Hongqiao
 6. Gemdale Lane
 7. Hongqiao Union Building
 8. WYSH
 9. Sichuang Building
 10. Livat Shanghai
11. Yi Fung Place
 12. Sunyoung Smart Technology Building
 13. UU Center
 14. Columbia Circle Phase II
 15. A.F.A Shanghai Rongqiao Center
 16. Crystal Bridge
 17. Hongqiao Uptown



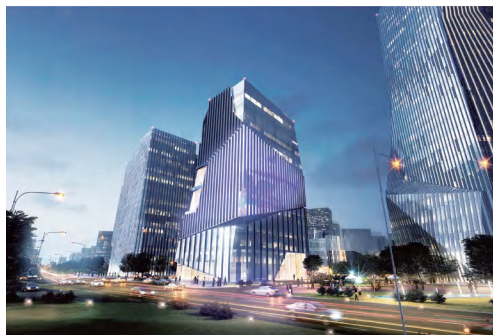
1. Oriental Pearl Triumph Center

Location: No. 1522, Kaixuan Rd.
 Floor area: 52,973.2 m²
 Completion time: January 2021



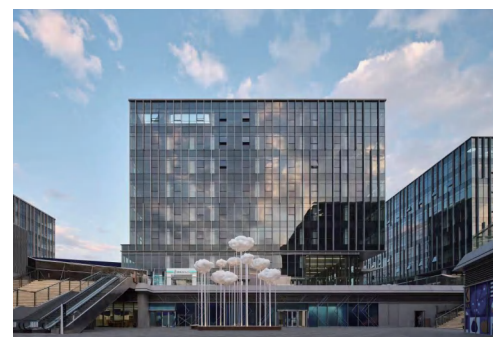
2. Baodi Xinhua

Location: No. 385, Dingxi Rd.
Floor area: 34,200 m²
Completion time: May 2021



3. IM Shanghai

Location: No. 1398, Kaixuan Rd.
Floor area: 257,822.6 m²
Completion time: July 2021



4. East Hongqiao Center

Location: No. 299, Youle Rd.
Floor area: 171,776 m²
Completion time: December 2021



5. EBA Center Hongqiao

Location: No. 541, West Tianshan Rd.
Floor area: 170,000 m²
Completion time: December 2021



6. Gemdale Lane

Location: No. 55, Lane 222, Panyu Rd.
Floor area: 22,376 m²
Completion time: December 2022



7. Hongqiao Union Building

Location: No. 99, Kaihong Rd.
Floor area: 109,072.3 m²
Completion time: December 2022



8. WYSH

Location: No. 168, Wuyi Rd.
Floor area: 20,000 m²
Completion time: 2023



9. Sichuang Building

Location: Building 3, No. 600, Tianshan Rd.
Floor area: 53,277 m²
Completion time: 2023



10. Livat Shanghai

Location: No. 788, Jinzhong Rd.
Floor area: 430,000 m²
Completion time: 2024



11. Yi Fung Place

Location: No. 199, Xianxia Rd.
Floor area: 89,202 m²
Completion time: 2024



12. Sunyoung Smart Technology Building

Location: No. 23, Lane 585, Tianshan Rd.
Floor area: 12,635 m²
Completion time: 2024



13. UU Center

Location: No. 823, Changning Rd.
Floor area: 100,100 m²
Completion time: 2024



14. Columbia Circle Phase II

Location: No. 1262, West Yan'an Rd.
Floor area: 24,000 m²
Completion time: 2024



15. A.F.A Shanghai Rongqiao Center

Location: No. 570, West Huaihai Rd.
Floor area: 229,878 m²
Estimated completion time: 2025



16. Crystal Bridge

Location: Tianshan Rd., Gubei Rd.
Floor area: 163,350 m²
Estimated completion time: 2025



17. Hongqiao Uptown

Location: Beidi Rd., North Guangshun Rd.
Floor area: 250,000 m²
Estimated completion time: 2025

Creative Parks

1. Creater Space | Xinwei Intelligent Valley T1

Location: No. 1328, Dingxi Rd.
Floor area: 1,647.26 m²



2. DoBe F525 Creative Woods

Location: No. 1, Lane 321, Wuyi Rd.
Floor area: 400 m²



Old Western-style Villas

1. Spanish-style Garden Villa on West Wuding Rd.

Location: No. 39, Lane 1371, West Wuding Rd.
Floor area: 664 m²



2. Detached Garden Villa on Wuyi Rd.

Location: No. 1, Lane 321, Wuyi Rd.
Floor area: 400 m²



3. Xinhua Villa in the Foreign Lane

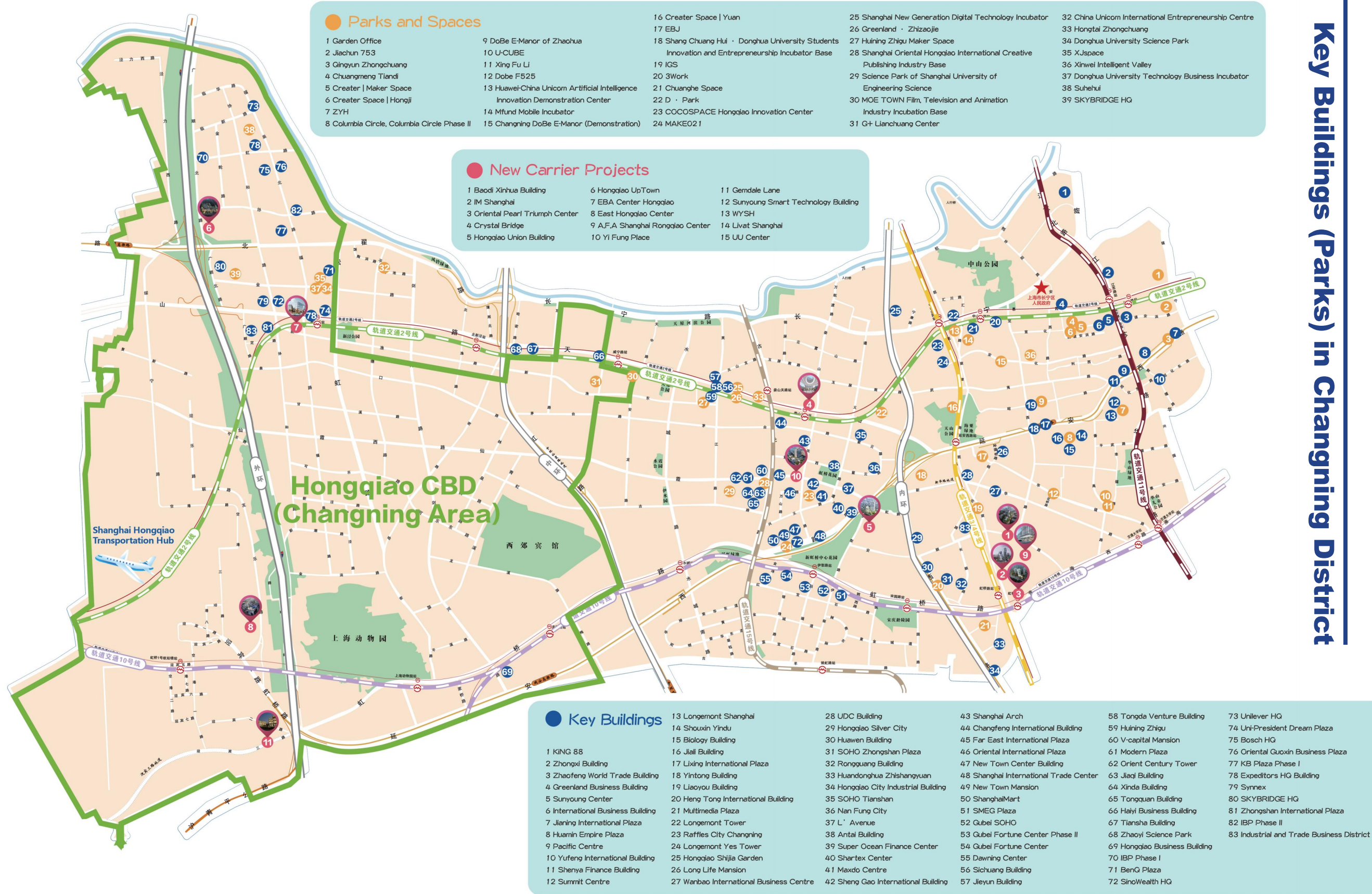
Location: No. 41, Lane 329, Xinhua Rd.
Floor area: 1,337.2 m²



7 Organization



The Changning District Investment Promotion Office is a dedicated department operating directly under the Changning District People's Government. Its primary responsibilities include: coordinating and allocating investment service resources in Changning; overseeing the activities of investment attraction and enterprise services in Changning; collaborating with relevant departments to formulate Changning's investment policies; collecting and analyzing various data related to promoting investments and serving enterprises in Changning; formulating policies to promote the development of the financial industry in Changning; establishing mechanisms to ensure financial stability and mitigate risks; and overseeing the management and provision of services related to local government-managed microfinance and guarantee businesses.



Key Buildings (Parks) in Changning District